



# Annual Financial Report

Fiscal Year Ended April 30, 2022

Prepared by:  
Rick Poole  
Executive Director

Susan Martellotta  
Executive Assistant/HR Manager

Lauterbach & Amen, LLP  
Certified Public Accountants

Administrative Offices  
1770 West Centennial Place  
Addison, Illinois 60101  
[nedsra.org](http://nedsra.org)

**NORTHEAST DUPAGE SPECIAL RECREATION ASSOCIATION  
ADDISON, ILLINOIS  
TABLE OF CONTENTS**

---

	<u>Page(s)</u>
<b>INTRODUCTORY SECTION</b>	
Agency Vision and Mission and Principal Officials.....	i
Organization Chart.....	ii
Letter of Transmittal .....	iii-v
<b>FINANCIAL SECTION</b>	
INDEPENDENT AUDITOR’S REPORT .....	1-4
<b>GENERAL PURPOSE EXTERNAL FINANCIAL STATEMENTS</b>	
Management’s Discussion and Analysis.....	MD&A 1-6
Basic Financial Statements	
Government-Wide Financial Statements	
Statement of Net Position.....	5
Statement of Activities .....	6
Fund Financial Statements	
Governmental Fund	
Balance Sheet.....	7
Reconciliation of Fund Balances of Governmental Fund to the Governmental Activities in the Statement of Net Position.....	8
Statement of Revenues, Expenditures and Changes in Fund Balance .....	9
Reconciliation of the Governmental Fund Statement of Revenues, Expenditures and Changes in Fund Balance to the Governmental Activities in the Statement of Activities .....	10
Notes to Financial Statements .....	11-29

**NORTHEAST DUPAGE SPECIAL RECREATION ASSOCIATION  
ADDISON, ILLINOIS  
TABLE OF CONTENTS (Continued)**

---

Page(s)

**FINANCIAL SECTION (Continued)**

**GENERAL PURPOSE EXTERNAL FINANCIAL STATEMENTS (Continued)**

Required Supplementary Information

Schedule of Revenues, Expenditures and Changes in Fund Balance - Budget and Actual - General Fund .....	30
Notes to Required Supplementary Information .....	31
Illinois Municipal Retirement Fund	
Schedule of Employer Contributions .....	32
Schedule of Changes in the Employer's Net Pension Liability and Related Ratios .....	33-34

**SUPPLEMENTAL SCHEDULE**

Schedule of Expenditures - Budget and Actual - General Fund .....	35-36
---	-------

**SUPPLEMENTAL FINANCIAL INFORMATION**

Member Agency Contributions - General Fund.....	37
Due to Member Agencies.....	38
Revenues by Source .....	39
Expenditures by Source.....	40
Service Demographics - by Partner Agency .....	41
Service Demographics - by Age Groups - Disabled Only .....	42
Historical Service Comparison .....	43

## **INTRODUCTORY SECTION**

## NEDSRA Principal Officials

### NEDSRA Board of Trustees

Chairman	Matthew Ellmann ..... Wood Dale Park District
Vice Chairman	Keith Knautz ..... Village of Glendale Heights
	Jen Hermonson ..... Addison Park District
	Phyllis Schmidt ..... Bensenville Park District
	Michael Hixenbaugh ..... Butterfield Park District
	Maryfran Leno ..... Itasca Park District
	Paul Friedrichs ..... Lombard Park District
	Bruce Baum ..... Medinah Park District
	Cathy Fallon ..... Oakbrook Terrace Park District
	Barb Cremin ..... Village of Schiller Park
	Greg Gola ..... Village of Villa Park

### Vision

An agency of excellence, demonstrated by member partners working cooperatively with Board, staff and the community to enhance the quality of life for each individual.

### Mission

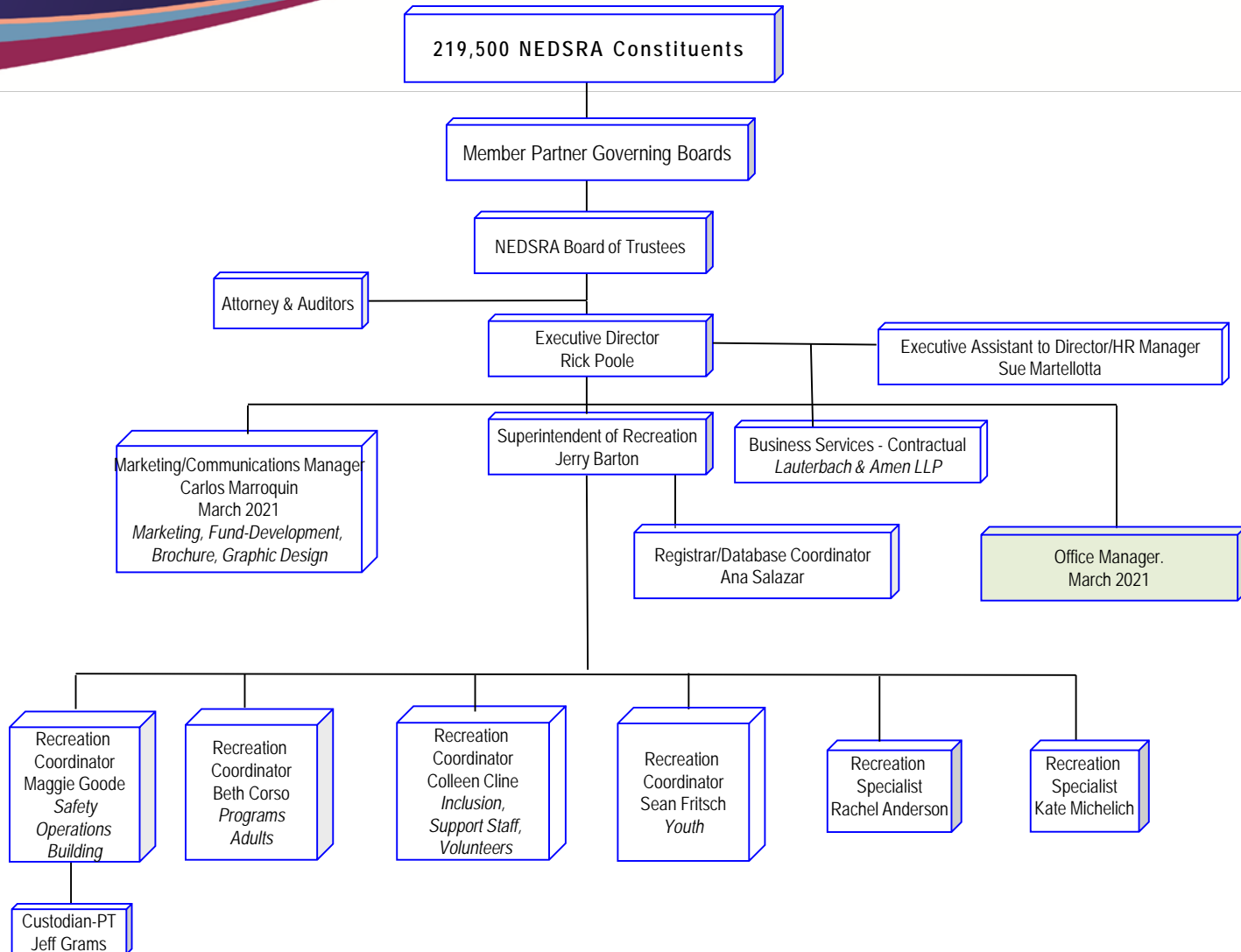
To serve as an integral partner with our member park districts and villages to positively impact individuals with disabilities through diverse recreation opportunities and community services.

### Our Core Values

Service with Compassion ♦ Excellence and Quality ♦ Integrity ♦ Commitment ♦ Fun

### Administration

Executive Director.....	Rick Poole
Superintendent.....	Jerry Barton
Executive Assistant to the Director/HR Manager .....	Susan Martellotta
Marketing & Communications Manager .....	Carlos Marroquin



August 15, 2022

To: NEDSRA Board of Trustees

State law requires that every general-purpose local government publish within six months of the close of the fiscal year, a complete set of audited financial statements. Attached please find the complete set of Northeast DuPage Special Recreation Association's (NEDSRA) audited financial statements for the fiscal year ended April 30, 2022.

Management assumes full responsibility for the completeness and reliability of the information contained in this report, based on a comprehensive framework of internal control that it has established for this purpose. Because the cost of internal control should not exceed anticipated benefits, the objective is to provide reasonable, rather than absolute, assurance that the financial statements are free of any material misstatements.

Sikich, LLP, have issued an unmodified opinion on Northeast DuPage Special Recreation Association's financial statements for the year ended April 30, 2022. The independent auditor's report is located at the front of the Financial Section of this report.

Management's Discussion and Analysis (MD&A) immediately follows the independent auditors report. It provides a narrative introduction, overview and analysis of the basic financial statements. The information in the MD&A complements this Letter of Transmittal and should be read in conjunction with it.

## **PROFILE OF THE GOVERNMENT ASSOCIATION**

### **History and Mission**

Northeast DuPage Special Recreation Association (NEDSRA) is a cooperative of eight park districts and three villages in northeast DuPage and west Cook Counties. NEDSRA was formed in 1976 to combine resources and avoid duplication among the member agencies in the provision of recreation for people with disabilities. Enrollment has increased some in post-pandemic environment, however is not at the level of past years. NEDSRA served over 1,430 distinct individuals, resulting in over 4,025 program registrations in 2021/22. NEDSRA's primary mission is to serve as an integral partner with our member park districts and villages to positively impact individuals with disabilities through diverse recreation opportunities and community services. NEDSRA's main objective is to meet the unique social and recreation needs of individuals with disabilities, so they may increase their enjoyment of life and reach their highest level of independence. This fiscal year's challenge was creating programming to bring about enrollment with in-person programs assuring the safety of all individuals and staff.

While NEDSRA does not maintain records regarding income or ethnicity, we believe that a considerable number of our clients fall into the low income and/or otherwise disadvantaged, high-risk youth categories, as several of our participants are wards of the State of Illinois and living within our community in independent living settings. To this end, NEDSRA has developed a *Fee Assistance Program*, which aggressively addresses the financial needs of our participants, and assures the availability of our services to all residents regardless of their financial difficulties. This fund has strong grassroots support and is funded from local service club and community contributions for this purpose. In 2021/22 \$8,273 was awarded in fee assistance.

- iii -

*Mission to serve as an integral partner with our member park districts and villages to positively impact individuals with disabilities through diverse recreation opportunities and community services.*

**Member Partner Communities: Addison ♦ Bensenville ♦ Butterfield ♦ Glendale Heights ♦ Itasca ♦ Lombard ♦ Medinah ♦ Oakbrook Terrace ♦ Schiller Park ♦ Villa Park ♦ Wood Dale**

### **Programs and Services Offered**

NEDSRA enhances the lives of people with disabilities by providing a multitude of targeted recreation services. In 2021/22, NEDSRA successfully implemented over 368 programs. Services are available for individuals of all ages, from birth through seniors, whose disabilities may include, but are not limited to: autistic spectrum disorders, developmental delays, hard-of-hearing or deaf, learning disabilities, blind/visual impairments, emotional and behavior disorders, trainable intellectual disabilities, educable intellectual disabilities, physical disabilities, severe and profound compound disabilities, mental illnesses, multi-disabilities and youths at risk. Inclusion services and support are offered year-round as an integral part of NEDSRA's services for our member partners and their residents enrolling in partner programs. During 2021/22 NEDSRA served 60 unique individuals through inclusion.

In February 2020 the Covid-19 pandemic began to affect the United States. As the spread increased it placed a great strain on agencies serving the public such as NEDSRA. In-person programs were halted and part-time staff were furloughed. This adversely affected the participants and their families at NEDSRA. Coming out of the pandemic mitigations, NEDSRA staff continue to create innovative programs for individuals with disabilities in the always evolving environment of life today.

### **Legal Authority and Governance**

NEDSRA and its member partners were authorized to enter into this cooperative agreement by Section 8-10b of the Illinois Park District Code and Section 11-95-14 of the Illinois Municipal Code and the laws amendatory thereof and supplementary thereto, and by Article VII Section 10 of the 1970 Constitution of the State of Illinois. The Association is governed by a Board of Trustees and the day-to-day business operations are managed by an Executive Director as stipulated in its Articles of Agreement and Bylaws. The Board of Trustees consists of one representative, usually an elected official or the Executive Director, from each member partner. Each member partner has one vote on all matters before the Board. NEDSRA has no tax levying authority and is dependent on the contributions from the member partners from their *Special Recreation Fund*. The formula for said contribution is also delineated in the Articles of Agreement for the Association as determined by the Board of Trustees and affirmed by the member partners.

The Board of Trustees establishes all major policies including, but not limited to: budgets, capital outlay, and long-range/strategic plans. A draft of the annual budget, with the capital plan and any related studies and plans, is presented to the Board of Trustees in February and March for review. If there are questions or concerns, they are addressed in the final budget, which is presented for the Board's review and approval in April/May of each year, prior to the beginning of the new fiscal year. All disbursements are presented to the Board of Trustees for review and ratification at the regularly scheduled Board meetings. The Board meets a minimum of eight times per year.

### **Agency Accomplishments**

NEDSRA has completed 45 years of service. NEDSRA has been recognized for achieving high standards of excellence in providing quality recreation services for people with disabilities. NEDSRA has received the National Gold Medal Award twice, in 1982 and again in 1996, for Excellence in Parks and Recreation Services for People with Disabilities - the highest national recognition in the field of parks and recreation. In 2018-19, NEDSRA earned a 97% Loss Control Review rating from the Park District Risk Management Association (PDRMA).



In 2021/22, NEDSRA allocated \$500,000 from the general fund balance with the singular purpose to be used for ADA projects within the 11 partner communities. NEDSRA also modernized the two second floor bathrooms to comply with current ADA standards and created four family bathrooms.

**Conclusion**

NEDSRA continually assesses its financial management and operations policies and procedures, making revisions or additions as the need arises. At the conclusion of any research, study by staff, the Board of Trustees must approve each of any revisions, recommendations or additions presented. All of the updated Policies and Procedures are distributed to all professional staff members and all members of the Board of Trustees.

NEDSRA would like to express appreciation to the staff whose dedication and efficiency are responsible for the preparation of this report. The agency would also like to thank the staff of Lauterbach & Amen, LLP for their professional support with the business services of NEDSRA and the preparation of this report.

In everything NEDSRA delivers, staff strive to adhere to the core values of Service with Compassion, Excellence and Quality, Integrity, Commitment and Fun. In all aspects of the agency the assurance of quality of service to our constituents in the communities served is a priority. The board of trustees and NEDSRA staff share in the appreciation for this report and the commitment to be responsible and diligent in their fiscal management of NEDSRA.

Respectfully submitted,



Rick Poole, CPRP  
Executive Director



Susan J. Martellotta  
Executive Assistant



Jerry Barton  
Superintendent of Recreation

## **FINANCIAL SECTION**

1415 West Diehl Road, Suite 400  
Naperville, IL 60563  
630.566.8400

**SIKICH.COM**

## **INDEPENDENT AUDITOR'S REPORT**

Board of Trustees  
Northeast DuPage Special  
Recreation Association  
Addison, Illinois

### **Opinions**

We have audited the accompanying financial statements of the governmental activities and the major fund of the Northeast DuPage Special Recreation Association (the Association) as of and for the year ended April 30, 2022, and the related notes to the financial statements, which collectively comprise the Association's basic financial statements as listed in the table of contents.

In our opinion, the basic financial statements referred to above present fairly, in all material respects, the respective financial position of the governmental activities and the major fund of the Northeast DuPage Special Recreation Association as of April 30, 2022, and the respective changes in financial position for the year then ended in conformity with accounting principles generally accepted in the United States of America.

### **Basis for Opinions**

We conducted our audit in accordance with auditing standards generally accepted in the United States of America (GAAS). Our responsibilities under these standards are further described in the Auditor's Responsibilities for the Audit of the Financial Statements section of our report. We are required to be independent of the Association and to meet our other ethical responsibilities, in accordance with the relevant ethical requirements relating to our audit. We believe that the audit evidence we have obtained is sufficient and appropriate to provide a basis for our audit opinions.

### **Responsibilities of Management for the Financial Statements**

Management is responsible for the preparation and fair presentation of these financial statements in accordance with accounting principles generally accepted in the United States of America; this includes the design, implementation and maintenance of internal control relevant to the preparation and fair presentation of financial statements that are free from material misstatement, whether due to fraud or error.

In preparing the financial statements, management is required to evaluate whether there are conditions or events, considered in the aggregate, that raise substantial doubt about the Association's ability to continue as a going concern for 12 months beyond the financial statement date, including any currently known information that may raise substantial doubt shortly thereafter.

### **Auditor's Responsibilities for the Audit of the Financial Statements**

Our objectives are to obtain reasonable assurance about whether the financial statements as a whole are free from material misstatement, whether due to fraud or error, and to issue an auditor's report that includes our opinions. Reasonable assurance is a high level of assurance but is not absolute assurance and therefore is not a guarantee that an audit conducted in accordance with GAAS will always detect a material misstatement when it exists. The risk of not detecting a material misstatement resulting from fraud is higher than for one resulting from error, as fraud may involve collusion, forgery, intentional omissions, misrepresentations, or the override of internal control. Misstatements are considered material if there is a substantial likelihood that, individually or in the aggregate, they would influence the judgment made by a reasonable user based on the financial statements.

In performing an audit in accordance with GAAS, we

- Exercise professional judgment and maintain professional skepticism throughout the audit.
- Identify and assess the risks of material misstatement of the financial statements, whether due to fraud or error, and design and perform audit procedures responsive to those risks. Such procedures include examining, on a test basis, evidence regarding the amounts and disclosures in the financial statements.
- Obtain an understanding of internal control relevant to the audit in order to design audit procedures that are appropriate in the circumstances, but not for the purpose of expressing an opinion on the effectiveness of the Association's internal control. Accordingly, no such opinion is expressed.
- Evaluate the appropriateness of accounting policies used and the reasonableness of significant accounting estimates made by management, as well as evaluate the overall presentation of the financial statements.
- Conclude whether, in our judgment, there are conditions or events, considered in the aggregate, that raise substantial doubt about the Association's ability to continue as a going concern for a reasonable period of time.

We are required to communicate with those charged with governance regarding, among other matters, the planned scope and timing of the audit, significant audit findings, and certain internal control-related matters that we identified during the audit.

## **Other Matters**

### *Required Supplementary Information*

Accounting principles generally accepted in the United States of America require that the management's discussion and analysis and the required supplementary information listed in the table of contents be presented to supplement the basic financial statements. Such information is the responsibility of management and, although not a part of the basic financial statements, is required by the Governmental Accounting Standards Board, who considers it to be an essential part of financial reporting for placing the basic financial statements in an appropriate operational, economic or historical context. We have applied certain limited procedures to the required supplementary information in accordance with auditing standards generally accepted in the United States of America, which consisted of inquiries of management about the methods of preparing the information and comparing the information for consistency with management's responses to our inquiries, the basic financial statements and other knowledge we obtained during our audit of the basic financial statements. We do not express an opinion or provide any assurance on the information because the limited procedures do not provide us with sufficient evidence to express an opinion or provide any assurance.

### *Supplementary Information*

Our audit was conducted for the purpose of forming opinions on the financial statements that collectively comprise the Association's basic financial statements. The supplemental schedule is presented for purposes of additional analysis and is not a required part of the basic financial statements. The supplemental schedule is the responsibility of management and was derived from and relate directly to the underlying accounting and other records used to prepare the basic financial statements.

The supplemental schedule has been subjected to the auditing procedures applied in the audit of the basic financial statements and certain additional procedures, including comparing and reconciling such information directly to the underlying accounting and other records used to prepare the basic financial statements or to the basic financial statements themselves, and other additional procedures in accordance with auditing standards generally accepted in the United States of America. In our opinion, the supplemental schedule is fairly stated in all material respects in relation to the basic financial statements as a whole

### *Other Information*

Management is responsible for the other information included in the annual report. The other information comprises the introductory section and supplemental financial information, but does not include the basic financial statements and our auditor's report thereon. Our opinions on the basic financial statements do not cover the other information, and we do not express an opinion or any form of assurance thereon.

In connection with our audit of the basic financial statements, our responsibility is to read the other information and consider whether a material inconsistency exists between the other information and the basic financial statements, or the other information otherwise appears to be materially misstated. If, based on the work performed, we conclude that an uncorrected material misstatement of the other information exists, we are required to describe it in our report.

We also have previously audited, in accordance with auditing standards generally accepted in the United States of America, financial statements of the governmental activities and the major fund of the Association as of and for the year ended April 30, 2021 and we expressed unmodified opinions on those financial statements. The audit was conducted for purposes of forming an opinion on the financial statements as a whole.

The 2021 comparative information included on the supplemental schedule are presented for purposes of additional analysis and are not a required part of the basic financial statements. Such information is the responsibility of management and was derived from and relates directly to the underlying accounting and other records used to prepare the 2021 financial statements. The information has been subjected to the auditing procedures applied in the audit of those financial statements and certain additional procedures, including comparing and reconciling such information directly to the underlying accounting and other records used to prepare the financial statements or to the financial statements themselves, and other additional procedures in accordance with auditing standards generally accepted in the United States of America. In our opinion, the information is fairly stated in all material respects in relation to the financial statements from which it has been derived.

*Sikich LLP*

Naperville, Illinois  
August 17, 2022

**GENERAL PURPOSE EXTERNAL  
FINANCIAL STATEMENTS**

## **MANAGEMENT'S DISCUSSION AND ANALYSIS**



# **NORTHEAST DUPAGE SPECIAL RECREATION ASSOCIATION**

## **Management's Discussion and Analysis April 30, 2022**

---

The Northeast DuPage Special Recreation Association provides the following overview and analysis of the Association's financial operations and attached financial statements for the fiscal year ended April 30, 2022. The following discussion is presented to enable the readers to more fully understand the accompanying audited financial statements. The Association is responsible for the fair and accurate presentation of all financial information as well as the internal controls and reporting procedures in creating the financial statements.

In management's opinion, the financial statements herewith reflect all material aspects of the Association's operations in an accurate, fair and complete manner. Readers are encouraged to consider the information presented here in conjunction with additional information furnished in the Letter of Transmittal, which can be found on pages iii - v of the report, and the Association's basic financial statements, which begin on page 5.

The financial statements are prepared in accordance with generally accepted accounting principles (GAAP) and follow the guidelines of the Governmental Accounting Standards Board (GASB). The major components of the financial statements are the overall Statement of Net Position and the overall Statement of Activities. The Statement of Net Position shows the amount that total Association assets and deferred outflows exceed total liabilities and deferred inflows that may be considered the current value of net worth for the Association. The Statement of Activities reflects the overall operation of the Association for the past year, excluding revenues from taxes from members, interest and miscellaneous items. This demonstrates how effectively the Association operated on a business level model. In simple terms, it shows how the Association would fare as a business, without the support of member agency contributions and investment earnings.

The Association's total assets and deferred outflows exceeded total liabilities and deferred inflows by \$1,911,885 and \$1,301,959 at April 30, 2022 and April 30, 2021, respectively. The Association had total capital assets net of depreciation of \$253,272 and \$180,715 at April 30, 2022 and April 30, 2021, respectively.

# NORTHEAST DUPAGE SPECIAL RECREATION ASSOCIATION

## Management's Discussion and Analysis April 30, 2022

---

### Overview of the Financial Statements

This discussion and analysis are intended to serve as an introduction to the Association's basic financial statements. The basic financial statements are comprised of three components: 1) government-wide financial statements, 2) fund financial statements, and 3) notes to the financial statements. This report also contains supplementary financial information in addition to the basic financial statements themselves.

**Government-Wide Financial Statements.** The government-wide financial statements are designed to provide readers with a broad overview of the Association's finances, in a matter similar to a private-sector business.

The Statement of Net Position presents information on all of the Association's assets and liabilities, with the difference between the two reported as net position. Over time, increases or decreases in net position may serve as a useful indicator of whether the financial position of the Association is improving or deteriorating.

The Statement of Activities presents information showing how the government's net position changed during the most recent fiscal year. All changes in net position are reported as soon as the underlying event giving rise to the change occurs, regardless of the timing of related cash flows. Thus, revenues and expenses are reported in this statement for some items that will only result in cash flows in future fiscal periods (e.g., earned but unused vacation leave).

Both of the government-wide financial statements distinguish functions of the Association that are principally supported by intergovernmental revenues (governmental activities) from other functions that are intended to recover all or a significant portion of their costs through user fees and charges (business-type activities). All of the Association's activities are considered governmental activities.

The government-wide financial statements can be found on pages 5 and 6 of this report.

**Fund Financial Statements.** A fund is a grouping of related accounts that is used to maintain control over resources that have been segregated for specific activities or objectives. The Association, like other local governments, uses fund accounting to ensure and demonstrate compliance with finance-related legal requirements. The fund financial statements provide reporting for the Association's operations at a fund level. A fund is a group of related accounts established for specific purpose to maintain the control of the resources for that purpose. The Association utilizes fund accounting that reports operations categorized by each of their purposes. There are three types of funds: governmental, proprietary and fiduciary. The Association has one governmental fund, which is the General Fund.

# NORTHEAST DUPAGE SPECIAL RECREATION ASSOCIATION

## Management's Discussion and Analysis April 30, 2022

---

### Overview of the Financial Statements – Continued

**Governmental Funds.** Governmental funds are used to account for essentially the same functions reported as governmental activities in the government-wide financial statements. However, unlike government-wide financial statements, governmental fund financial statements focus on near-term inflows and outflows of spendable resources, as well as on balances of spendable resources available at the end of the fiscal year. Such information may be useful in evaluating the Association's near-term financing requirements.

Because the focus of governmental funds is narrower than that of the government-wide financial statements, it is useful to compare the information presented for governmental funds with similar information presented for governmental activities in the government-wide financial statements. By doing so, readers may better understand the long-term impact of the government's near-term financing decisions. Both the governmental fund balance sheet and the governmental fund statement of revenues, expenditures, and changes in fund balances provide a reconciliation to facilitate the comparison between governmental funds and governmental activities.

The Association adopts an annual appropriated budget for its General Fund. A budgetary comparison statement for these funds has been provided for the General Fund to demonstrate compliance with this budget.

The basic governmental fund financial statements can be found on pages 7 through 10 of this report.

**Notes to the Financial Statements.** The notes provide additional information that is essential to a full understanding of the data provided in the government-wide and fund financial statements.

The notes to the financial statements can be found on pages 11 through 29 of this report.

**Other Information.** In addition to the basic financial statements and accompanying notes, this report also presents a detailed schedule of expenditures in the General Fund – Budget and Actual.

### Government-Wide Financial Analysis

As noted earlier, net position may serve over time as a useful indicator of a government's financial position. In the case of the Association, assets and deferred outflows exceeded liabilities and deferred inflows by \$1,911,885 at the close of the most recent fiscal year.

# NORTHEAST DUPAGE SPECIAL RECREATION ASSOCIATION

## Management's Discussion and Analysis April 30, 2022

---

---

### Government-Wide Financial Analysis – Continued

	2022	2021
Current and Other Assets	\$ 2,977,301	2,550,336
Capital Assets	253,272	180,715
Total Assets	<u>3,230,573</u>	<u>2,731,051</u>
Deferred Outflows of Resources	<u>280,100</u>	329,639
Current Liabilities	847,778	736,359
Noncurrent Liabilities	463,619	830,418
Total Liabilities	<u>1,311,397</u>	<u>1,566,777</u>
Deferred Inflows of Resources	<u>287,391</u>	191,954
Net Position		
Investment in Capital Assets	253,272	180,715
Restricted	26,452	13,611
Unrestricted	<u>1,632,161</u>	<u>1,107,633</u>
Total Net Position	<u>1,911,885</u>	<u>1,301,959</u>

The largest components of the assets are cash, cash equivalents and investments and receivables of \$2,977,301 and \$2,550,336 at April 30, 2022 and April 30, 2021, respectively) and capital assets \$253,272 and \$180,715 at April 30, 2022 and April 30, 2021, respectively), which include the furniture and equipment, and vehicles. These items are depreciated over their useful lives.

The largest component of the total liabilities is due to the implementation of GASB Statement No. 68. GASB Statement No. 68 requires governments to include the IMRF net pension liability on the financial statements. The IMRF – Net Pension Liability represents \$431,185 of the total liabilities of \$1,311,397 as of April 30, 2022.

NEDSRA maintains and segregates certain funds for the member partners on an ongoing basis until such time as they receive a letter of direction from the member partner requesting the distribution of funds for the purpose, and as stipulated in their letter of direction/request. The distributions of these funds are brought before the Board of Trustees for approval at a public regularly scheduled Board of Trustees meeting.

# NORTHEAST DUPAGE SPECIAL RECREATION ASSOCIATION

## Management's Discussion and Analysis April 30, 2022

### Government-Wide Financial Analysis – Continued

The statement of activities shows the overall expenses and revenues for services the Association provided. Revenues are classified as either program revenues, which consist of charges for services and grants and contributions, or general revenues, which are primarily made up of contributions of tax assessments from its members, unrestricted investment earnings and miscellaneous items. The change in net position is total revenues less expenses. A decrease in net position does not necessarily mean poor performance, as planned usage of cash on hand or fund reserves will also be reflected here.

Revenues	2022	2021
Program Revenues		
Charges for Services	\$ 198,447	34,980
Fundraising/Grants and Contributions	339,419	303,441
Capital Grants/Contributions	-	-
General Revenues		
Contributions from Member Districts -		
Tax Assessments	1,681,916	1,658,694
Other	167,237	10,196
Total Revenues	<u>2,387,019</u>	<u>2,007,311</u>
Expenses		
Total Expenses	<u>1,777,093</u>	<u>1,531,703</u>
Change in Net Position	609,926	475,608
Net Position - Beginning	1,301,959	826,351
Net Position - Ending	<u>1,911,885</u>	<u>1,301,959</u>

# NORTHEAST DUPAGE SPECIAL RECREATION ASSOCIATION

## Management's Discussion and Analysis April 30, 2022

---

### Financial Analysis

The financial analysis of the operations by fund including a comparison of actual to budget operations, allows for a greater understanding of the overall Association operations. The Association adheres to fund accounting to ensure and comply with all finance related legal requirements for special recreation associations. The Association's activity was all recorded within a General Fund. The fund financial statements exclude depreciation expense, which is also not a budgeted item.

The General Fund: The General Fund actual revenues were greater than expenditures by \$315,546. Anticipated net revenue from the PPP Loans exceeded expectations.

### Capital Asset and Debt Administration

Capital Assets: The Association's investment in capital assets as of April 30, 2022 and April 30, 2021 amounts to \$253,272 and \$180,715 respectively (net of accumulated depreciation). This investment in capital assets includes furniture and equipment, and vehicles.

	2022	2021
Construction in Progress	\$ -	-
Furniture and Equipment	680,540	537,701
Vehicles	455,134	455,134
Total Cost	1,135,674	992,835
Less Accumulated Depreciation	(882,402)	(812,120)
Net Capital Assets	253,272	180,715

Additional information on the Association's capital assets can be found in Note 3 on page 17 of this report.

### Request for Information

This financial report is designed to provide a general overview of the financial operations of the Association. Questions concerning any of the information in this report, or requests for additional information should be sent to the attention of the Executive Director, NEDSRA, 1770 W. Centennial Place Addison, IL 60101-1076.

## **BASIC FINANCIAL STATEMENTS**

**NORTHEAST DUPAGE SPECIAL RECREATION ASSOCIATION  
ADDISON, ILLINOIS**

STATEMENT OF NET POSITION

April 30, 2022

---

**ASSETS**

Current assets	
Cash and investments	\$ 2,732,554
Receivables - net of allowance	
Accounts	8,503
Intergovernmental	232,094
Prepays	<u>4,150</u>
Total current assets	<u>2,977,301</u>
Noncurrent assets	
Capital assets	
Depreciable	1,135,674
Accumulated depreciation	<u>(882,402)</u>
Total noncurrent assets	<u>253,272</u>
Total assets	<u>3,230,573</u>

**DEFERRED OUTFLOWS OF RESOURCES**

Pension items	<u>280,100</u>
Total deferred outflows of resources	<u>280,100</u>
Total assets and deferred outflows of resources	<u>3,510,673</u>

**LIABILITIES**

Current liabilities	
Accounts payable	31,164
Accrued payroll	38,942
Unearned income	10,962
Due to member agencies	
ADA liability	<u>766,710</u>
Total current liabilities	<u>847,778</u>
Noncurrent liabilities	
Compensated absences payable	32,434
IMRF - net pension liability	<u>431,185</u>
Total noncurrent liabilities	<u>463,619</u>
Total liabilities	<u>1,311,397</u>

**DEFERRED INFLOWS OF RESOURCES**

Pension items - IMRF	<u>287,391</u>
Total deferred inflows of resources	<u>287,391</u>
Total liabilities and deferred inflows of resources	<u>1,598,788</u>

**NET POSITION**

Investment in capital assets	253,272
Restricted	26,452
Unrestricted	<u>1,632,161</u>
<b>TOTAL NET POSITION</b>	<u><u>\$ 1,911,885</u></u>

See accompanying notes to financial statements.



**NORTHEAST DUPAGE SPECIAL RECREATION ASSOCIATION  
ADDISON, ILLINOIS**

STATEMENT OF ACTIVITIES

For the Year Ended April 30, 2022

<b>FUNCTIONS/PROGRAMS</b>	<b>Program Revenues</b>			<b>Net (Expense) Revenue and Change in Net Position</b>
	<b>Expenses</b>	<b>Charges for Services</b>	<b>Operating Grants and Contributions</b>	
<b>PRIMARY GOVERNMENT</b>				
Governmental Activities				
Culture and recreation	\$ 1,777,093	\$ 198,447	\$ 339,419	\$ -
				<u>\$ (1,239,227)</u>
		General Revenues		
				1,681,916
				1,466
				<u>165,771</u>
			Total	<u>1,849,153</u>
			CHANGE IN NET POSITION	609,926
			NET POSITION, MAY 1	<u>1,301,959</u>
			<b>NET POSITION, APRIL 30</b>	<u><u>\$ 1,911,885</u></u>

See accompanying notes to financial statements.

**NORTHEAST DUPAGE SPECIAL RECREATION ASSOCIATION  
ADDISON, ILLINOIS**

**BALANCE SHEET  
GOVERNMENTAL FUND**

April 30, 2022

---

	<b>General</b>
<b>ASSETS</b>	
Cash and investments	\$ 2,732,554
Receivables - net of allowance	
Accounts	8,503
Intergovernmental	232,094
Prepays	4,150
	4,150
<b>TOTAL ASSETS</b>	<b>\$ 2,977,301</b>
<b>LIABILITIES AND FUND BALANCE</b>	
<b>LIABILITIES</b>	
Accounts payable	\$ 31,164
Accrued payroll	38,942
Unearned revenue	10,962
Due to member agencies	
ADA liability	766,710
	766,710
Total liabilities	847,778
<b>FUND BALANCE</b>	
Nonspendable	4,150
Restricted	26,452
Committed	440,972
Assigned	136,866
Unassigned	1,521,083
	1,521,083
Total fund balance	2,129,523
<b>TOTAL LIABILITIES AND FUND BALANCE</b>	<b>\$ 2,977,301</b>

See accompanying notes to financial statements.

**NORTHEAST DUPAGE SPECIAL RECREATION ASSOCIATION  
ADDISON, ILLINOIS**

**RECONCILIATION OF FUND BALANCES OF GOVERNMENTAL FUND TO THE  
GOVERNMENTAL ACTIVITIES IN THE STATEMENT OF NET POSITION**

April 30, 2022

---

<b>FUND BALANCE OF GOVERNMENTAL FUND</b>	<b>\$ 2,129,523</b>
Amounts reported for governmental activities in the statement of net position are different because:	
Capital assets used in governmental activities are not financial resources and, therefore, are not reported in the governmental funds	253,272
Differences between expected and actual experiences, assumption changes, net differences between projected and actual earnings and contributions subsequent to the measurement date for net pension liabilities are recognized as deferred outflows on the statement of net position	
Illinois Municipal Retirement Fund	280,100
Differences between expected and actual experiences, assumption changes, net differences between projected and actual earnings recognized as deferred inflows of resources in the statement of net position	
Illinois Municipal Retirement Fund	(287,391)
Long-term liabilities are not due and payable in the current period and, therefore, are not reported in the governmental funds	
Compensated absences payable	(32,434)
Net pension liability for the Illinois Municipal Retirement Fund	(431,185)
<b>NET POSITION OF GOVERNMENTAL ACTIVITIES</b>	<b><u>\$ 1,911,885</u></b>

See accompanying notes to financial statements.

**NORTHEAST DUPAGE SPECIAL RECREATION ASSOCIATION  
ADDISON, ILLINOIS**

**STATEMENT OF REVENUES, EXPENDITURES  
AND CHANGES IN FUND BALANCES  
GOVERNMENTAL FUND**

For the Year Ended April 30, 2022

---

	<u>General</u>
<b>REVENUES</b>	
Member agency contributions	\$ 1,681,916
Charges for services	198,447
Fund development	107,325
Intergovernmental	232,094
Investment income	1,466
Miscellaneous	<u>16,771</u>
 Total revenues	 2,238,019
 <b>EXPENDITURES</b>	
Culture and recreation	<u>1,922,473</u>
 NET CHANGE IN FUND BALANCE	 315,546
 FUND BALANCE, MAY 1	 <u>1,813,977</u>
 <b>FUND BALANCE, APRIL 30</b>	 <u><u>\$ 2,129,523</u></u>

See accompanying notes to financial statements.

**NORTHEAST DUPAGE SPECIAL RECREATION ASSOCIATION  
ADDISON, ILLINOIS**

**RECONCILIATION OF THE GOVERNMENTAL FUND STATEMENT OF REVENUES,  
EXPENDITURES AND CHANGES IN FUND BALANCE TO THE  
GOVERNMENTAL ACTIVITIES IN THE STATEMENT OF ACTIVITIES**

For the Year Ended April 30, 2022

<b>NET CHANGE IN FUND BALANCE - TOTAL GOVERNMENTAL FUND</b>	<b>\$ 315,546</b>
---	-------------------

Amounts reported for governmental activities in the statement of activities are different because:

Governmental funds report capital outlay as expenditures; however, in the statement of activities the cost of those assets is allocated over their estimated useful lives and reported as depreciation expense

Capital outlays	142,839
Depreciation expense	(70,282)

The change in the net pension liabilities are only reported only in the statement of activities

Illinois Municipal Retirement Fund	212,697
------------------------------------	---------

The change in deferred inflows and outflows of resources for net pension liabilities are reported only in the statement of activities

Illinois Municipal Retirement Fund	(144,976)
------------------------------------	-----------

The forgiveness of the PPP loan is not considered a revenue in the fund financials

	149,000
--	---------

Some expenses reported in the statement of activities do not require the use of current financial resources and, therefore, are not reported as expenditures in governmental funds

Change in compensated absences payable	5,102
--	-------

<b>CHANGE IN NET POSITION OF GOVERNMENTAL ACTIVITIES</b>	<b>\$ 609,926</b>
--	-------------------

See accompanying notes to financial statements.

**NORTHEAST DUPAGE SPECIAL RECREATION ASSOCIATION  
ADDISON, ILLINOIS**

NOTES TO FINANCIAL STATEMENTS

April 30, 2022

---

**1. SUMMARY OF SIGNIFICANT ACCOUNTING POLICIES**

The financial statements of the Northeast DuPage Special Recreation Association (the Association) have been prepared in conformity with accounting principles generally accepted in the United States of America, as applied to government units (hereinafter referred to as generally accepted accounting principles (GAAP)). The Governmental Accounting Standards Board (GASB) is the accepted standard-setting body for establishing governmental accounting and financial reporting principles. The more significant of the Association's accounting policies are described below.

a. Reporting Entity

The Association was formed in 1976 by 12 governmental agencies for the purpose of developing specialized recreation and education activities for children and adults who are physically, mentally or emotionally disabled, and to share the expense for such programs and services on a cooperative basis. Principal operations began with the 1977 summer activities.

Each member governmental agency is party to a cooperative agreement/contract herein after referred to as "the Articles of Agreement." These entities are required to contribute the funds collected based on the extensions of the rate by the DuPage County Assessor's Office. These funds are to be forwarded to the Association on a timely basis upon receipt and distribution by the member entities of these funds from DuPage County. Park districts and municipalities contribute to the Association voluntarily, as there are no statutes requiring their specific participation.

Park districts are given their authority to act through the enabling legislation stipulated in Chapter 105: 8-10-1, 105: 8-10-2 and 105: 5-8 of the Illinois Revised Statutes as amended, 1983 (often referred to as the "Park District Code"). Municipalities are given their authority to act through the enabling legislation stipulated in Chapter 24: 11-95-13 and 11-95-14 of the Illinois Revised Statutes as amended, 1983 (often referred to as the "Municipal Code").

There are presently eight park districts and three municipalities as members in good standing of the Association. The Board of Trustees is comprised of one representative from each member entity, selected and duly appointed by the respective member entity. The Board of Trustees is notified in writing of any changes that take place in the representation of any member entity.

**NORTHEAST DUPAGE SPECIAL RECREATION ASSOCIATION**  
**ADDISON, ILLINOIS**  
NOTES TO FINANCIAL STATEMENTS (Continued)

---

**1. SUMMARY OF SIGNIFICANT ACCOUNTING POLICIES (Continued)**

a. Reporting Entity (Continued)

The Board of Trustees amended and restated its Articles of Agreement on September 13, 2006. Amendments to the Association's Articles of Agreement and Bylaws were introduced for the Board of Trustees' consideration that would address member unity and financial stabilization. The Articles of Agreement were subsequently approved by all of the member partners' governing boards.

The funding formula was updated on May 8, 2013. For fiscal year 2014, if a Member Partner's 2012 EAV is greater than its 2011 EAV, then the amount of the Member Partner's annual contribution for the fiscal year will increase from the Member Partner's MPCB by a percentage equal to the percentage increase in the CPI-U for the 12-month period ending December 31, 2012 - i.e., by 1.70%. If a Member Partner's 2012 EAV is equal to or less than its 2011 EAV, then the amount of the Member Partner's annual contribution for the fiscal year will be equal to and will not increase from the Member Partner's MPCB.

For each fiscal year following 2014, if a Member Partner's EAV for the calendar year in which the fiscal year begins (latest EAV) increases from the Member Partner's EAV for the previous calendar year (previous EAV), then the Member Partner's annual contribution will increase from the amount of its annual contribution for the previous fiscal year by a percentage equal to the percentage increase in the CPI-U for the 12-month period ending on the December 31 which preceded the fiscal year for which the Member Partners' annual contributions are being computed. If a Member Partner's latest EAV is equal to or less than its previous EAV, then the Member Partner's annual contribution for the fiscal year for which Member Partners' annual contributions are being computed will be equal to and will not increase from the Member Partner's annual contribution for the preceding fiscal year.

In determining the financial reporting entity, the Association complies with the provisions of GASB Statement No. 61, *The Financial Reporting Omnibus - an Amendment of GASB Statements No. 14 and No. 34*, and includes all component units that have a significant operational or financial relationship with the Association. The Association is considered a jointly governed organization of the members pursuant to GASB Statement No. 14. Based upon the criteria set forth in the GASB Statements No. 14 and 61, there are no component units included in the reporting entity.

**NORTHEAST DUPAGE SPECIAL RECREATION ASSOCIATION**  
**ADDISON, ILLINOIS**  
NOTES TO FINANCIAL STATEMENTS (Continued)

---

**1. SUMMARY OF SIGNIFICANT ACCOUNTING POLICIES (Continued)**

b. Fund Accounting

The Association uses funds to report on its financial position and the changes in financial position. Fund accounting is designed to demonstrate legal compliance and to aid financial management by segregating transactions related to certain government functions or activities. A fund is a separate accounting entity with a self-balancing set of accounts. Funds are classified into the following categories: governmental, proprietary and fiduciary. The Association has no proprietary or fiduciary funds.

Governmental funds are used to account for all the Association's general activities, including the acquisition or construction of capital assets and the servicing of general long-term debt. The General Fund is used to account for all activities of the Association.

c. Government-Wide and Fund Financial Statements

The government-wide financial statements (i.e., the statement of net position and the statement of activities) report information on all of the activities of the Association. The effect of material interfund activity, if any, has been eliminated from these statements. Governmental activities, which normally are supported by taxes and intergovernmental revenues, are reported separately from business-type activities, if any, which rely to a significant extent on fees and charges for support.

The statement of activities demonstrates the degree to which the direct expenses of a given function, segment or program are offset by program revenues. Direct expenses are those that are clearly identifiable with a specific function or segment. Program revenues include (1) charges to customers or applicants who purchase, use or directly benefit from goods, services or privileges provided by a given function or segment and (2) grants and shared revenues that are restricted to meeting the operational or capital requirements of a particular function or segment. Taxes and other items not properly included among program revenues are reported instead as general revenues.

Separate financial statements are provided for the governmental fund.

The Association reports the following major governmental fund:

The General Fund is the Association's primary operating fund. It accounts for all financial resources of the Association, except those accounted for in another fund.



**NORTHEAST DUPAGE SPECIAL RECREATION ASSOCIATION**  
**ADDISON, ILLINOIS**  
NOTES TO FINANCIAL STATEMENTS (Continued)

---

**1. SUMMARY OF SIGNIFICANT ACCOUNTING POLICIES (Continued)**

d. Measurement Focus, Basis of Accounting and Financial Statement Presentation

The government-wide financial statements are reported using the economic resources measurement focus and the accrual basis of accounting. Revenues are recorded when earned and expenses are recorded when a liability is incurred. Grants and similar items are recognized as revenue as soon as all eligibility requirements imposed by the provider have been met.

Governmental fund financial statements are reported using the current financial resources measurement focus and the modified accrual basis of accounting. Revenues are recognized as soon as they are both measurable and available. Revenues are considered to be available when they are collectible within the current period or soon enough thereafter to pay liabilities of the current period. The Association considers revenues to be available if they are collected within 60 days of the end of the current fiscal period. Expenditures generally are recorded when a fund liability is incurred. However, debt service expenditures, if any, are recorded only when payment is due.

Investment income, operating fees and member services associated with the current fiscal period are all considered to be susceptible to accrual and are recognized as revenues of the current fiscal period. All other revenue items are considered to be measurable and available only when cash is received by the Association.

The Association reports unearned/unavailable revenue on its financial statements. Unavailable revenues arise when a potential revenue does not meet both the measurable and available or earned criteria for recognition in the current period. Unearned revenues also arise when resources are received by the Association before it has a legal claim to them or prior to the provision of services, as when grant monies are received prior to the incurrence of qualifying expenditures. In subsequent periods, when both revenue recognition criteria are met, or when the Association has a legal claim to the resources, the liability and/or deferred inflows of resources for unavailable/unearned revenue is removed from the financial statements and revenue is recognized.

e. Investments

Investments with a maturity of one year or less when purchased are stated at amortized cost. Investments with a maturity greater than one year when purchased are reported at fair value. Non-negotiable certificates of deposit, if any, are reported at cost.

**NORTHEAST DUPAGE SPECIAL RECREATION ASSOCIATION**  
**ADDISON, ILLINOIS**  
NOTES TO FINANCIAL STATEMENTS (Continued)

---

**1. SUMMARY OF SIGNIFICANT ACCOUNTING POLICIES (Continued)**

e. Investments (Continued)

The Association categorizes its fair value measurements within the fair value hierarchy established by GAAP. The hierarchy is based on the valuation inputs used to measure the fair value of the asset. Level 1 inputs are quoted prices in active markets for identical assets; Level 2 inputs are significant other observable inputs; and Level 3 inputs are significant unobservable inputs. The Association does not have any investments at fair value at April 30, 2022.

f. Prepaid Expenses/Items

Payments made to vendors for services that will benefit periods beyond the date of this report are recorded as prepaid expenses/items using the consumption method.

g. Capital Assets

Capital assets are recorded as expenditures at the time of purchase. Capital assets, which include property, plant, equipment and infrastructure assets (e.g., parking lots and similar items), if any, are reported in the applicable governmental columns in the government-wide financial statements. Capital assets are defined by the Association as assets with an initial, individual cost in excess of \$2,000 and an estimated useful life in excess of one year. Such assets are recorded at historical cost or estimated historical cost if purchased or constructed. Donated capital assets are recorded at estimated acquisition value at the date of donation.

The costs of normal maintenance and repairs that do not add to the value or service capacity of the asset or materially extend asset lives are not capitalized.

Major outlays for capital assets and improvements are capitalized as projects are constructed. Capital assets are depreciated using the straight-line method over the following estimated useful lives:

Assets	Years
Furniture and equipment	3-7
Vehicles	5

**NORTHEAST DUPAGE SPECIAL RECREATION ASSOCIATION**  
**ADDISON, ILLINOIS**  
NOTES TO FINANCIAL STATEMENTS (Continued)

---

**1. SUMMARY OF SIGNIFICANT ACCOUNTING POLICIES (Continued)**

h. Compensated Absences

In accordance with GASB Interpretation No. 6, *Accounting for Certain Liabilities*, only vested or accumulated vacation leave including related Social Security and Medicare that is committed to be liquidated at April 30, 2022, is reported as an expenditure and a fund liability of the governmental fund that will pay it. Vested or accumulated vacation of governmental activities at the government-wide level is recorded as an expense and liability as the benefits accrue to employees. Sick leave does not vest upon termination or retirement and, therefore, no liability has been recorded for this.

i. Due to Member Agencies

The funds are amounts due to member agencies and are to be paid back to the member agencies on a project basis for ADA upon request from the member agency.

j. Fund Balance/Net Position

In the fund financial statements, governmental funds can report nonspendable fund balance for amounts that are either not spendable in form or legally or contractually required to be maintained intact. Restrictions of fund balance are reported for amounts constrained by legal restrictions from outside parties for use for a specific purpose or externally imposed by outside entities. The restricted fund balances for vehicle replacement is from enabling legislation adopted by the Association. Committed fund balance is constrained by formal actions of the Association's Board of Trustees, which is considered the Association's highest level of decision-making authority. Formal actions include resolutions approved by the Board of Trustees. Assigned fund balance represents amounts constrained by the Association's intent to use them for a specific purpose. The authority to assign fund balance has been delegated to the Board of Trustees; however, this has not been authorized through a formal policy. Any residual General Fund balance is reported as unassigned.

Since no fund balance policy is in place, the Association's flow of funds assumption defaults to that described in GASB Statement No. 54. This prescribes that the funds with the highest level of constraint are expended first. If restricted or unrestricted funds are available for spending, the restricted funds are spent first. Additionally, if different levels of unrestricted funds are available for spending, the Association considers committed funds to be expended first followed by assigned and then unassigned funds.

**NORTHEAST DUPAGE SPECIAL RECREATION ASSOCIATION**  
**ADDISON, ILLINOIS**  
NOTES TO FINANCIAL STATEMENTS (Continued)

---

**1. SUMMARY OF SIGNIFICANT ACCOUNTING POLICIES (Continued)**

j. Fund Balance/Net Position (Continued)

In the government-wide financial statements, restricted net position are legally restricted by outside parties for a specific purpose. Net investment in capital assets represents the book value of capital assets less any long-term debt principal outstanding issued to construct capital assets.

k. Deferred Outflows/Inflows of Resources

In addition to assets, the statement of financial position will sometimes report a separate section for deferred outflows of resources. This separate financial statement element, deferred outflows of resources, represents a consumption of net assets that applies to a future period(s) and so will not be recognized as an outflow of resources (expense/expenditure) until then. In addition to liabilities, the statement of financial position will sometimes report a separate section for deferred inflows of resources. This separate financial statement element, deferred inflows of resources, represents an acquisition of net assets that applies to a future period(s) and so will not be recognized as an inflow of resources (revenue) until that time.

l. Use of Estimates

The preparation of financial statements in conformity with GAAP requires management to make estimates and assumptions that affect the reported amounts of assets; deferred outflows of resources, liabilities; deferred inflows of resources; and disclosure of contingent assets and liabilities at the date of the financial statements and the reported amounts of revenues and expenditures/expenses during the reporting period. Actual results could differ from those estimates.

m. Postponement of Implementation of Certain Authoritative Guidance

In accordance with the provisions of GASB Statement No. 95, *Postponement of the Effective Dates of Certain Authoritative Guidance*, the Association has delayed the implementation of GASB Statement No. 87, *Leases*, to April 30, 2023.

**2. DEPOSITS AND INVESTMENTS**

Illinois Compiled Statutes (ILCS) and the Association's investment policy authorize the Association to deposits/invest in commercial banks, savings and loan institutions, obligations of the U.S. Treasury and U.S. agencies, obligations of states and their political subdivisions, credit union shares, repurchase agreements, commercial paper rated within the three highest classifications by at least two standard rating services and The Illinois Funds.

**NORTHEAST DUPAGE SPECIAL RECREATION ASSOCIATION**  
**ADDISON, ILLINOIS**  
NOTES TO FINANCIAL STATEMENTS (Continued)

---

**2. DEPOSITS AND INVESTMENTS (Continued)**

It is the policy of the Association to invest its funds in a manner which will provide the highest investment return with the maximum security while meeting the daily cash flow demands of the Association and conforming to all state and local statutes governing the investment of public funds, using the “prudent person” standard for managing the overall portfolio. The primary objective of the policy is safety (preservation of capital and protection of investment principal), liquidity and yield.

The Illinois Public Treasurers’ Investment Pool, known as The Illinois Funds, operates as a qualified external investment pool in accordance with the criteria established in GASB Statement No. 79, *Certain External Investment Pools and Pool Participants*, and thus, reports all investments at amortized cost rather than fair value. The investment in The Illinois Funds by participants is also reported at amortized cost. The Illinois Funds does not have any limitations or restrictions on participant withdrawals. The Illinois Treasurer’s Office issues a separate financial report for The Illinois Funds which may be obtained by contacting the Administrative Office at Illinois Business Center, 400 West Monroe Street, Suite 401, Springfield, Illinois 62704.

a. Deposits with Financial Institutions

Custodial credit risk for deposits with financial institutions is the risk that in the event of bank failure, the Association’s deposits may not be returned to it. The Association’s investment policy requires pledging of collateral for all bank balances in excess of federal depository insurance with the collateral held by an agent of the Association in the Association’s name. Total funds exceeding the deposit insurance limits must have collateral provided as 110% of the fair market value of the net amount of the Association’s funds on deposit at each financial institution.

b. Investments

Interest rate risk is the risk that changes in interest rates will adversely affect the market value of an investment. In accordance with its investment policy, the Association limits its exposure to interest rate risk by structuring the portfolio to provide liquidity. The Association’s investment policy limits its exposure to interest rate risk by requiring that the investment portfolio remain sufficiently liquid to meet all operating requirements that may be reasonably anticipated. This is accomplished by structuring the portfolio so that securities mature concurrent with cash needs to meet anticipated demands.

Credit risk is the risk that an issuer or other counterparty to an investment will not fulfill its obligations. State law limits investments in commercial paper, corporate bonds and mutual funds to the top two ratings issued by nationally recognized statistical rating organizations. The Association’s investment policy does not further limit investment choices besides those authorized under state statute. At year end, the Association’s investment in The Illinois Funds was rated AAA by Standard & Poor’s.

**NORTHEAST DUPAGE SPECIAL RECREATION ASSOCIATION**  
**ADDISON, ILLINOIS**  
NOTES TO FINANCIAL STATEMENTS (Continued)

**2. DEPOSITS AND INVESTMENTS (Continued)**

b. Investments (Continued)

Concentration of credit risk is the risk of loss attributed to the magnitude of the Association's investment in a single issuer. The Association's investment policy does not mitigate concentration risk.

Custodial credit risk for investments is the risk that, in the event of the failure of the counterparty to the investment, the Association will not be able to recover the value of its investments that are in possession of an outside party. The Association's investment policy does not mitigate custodial credit risk for investments. The Association's investment in The Illinois Funds is not subject to custodial credit risk.

**3. CAPITAL ASSETS**

Capital asset activity for the year ended April 30, 2022 was as follows:

	Balances May 1	Increases	Decreases	Balances April 30
<b>GOVERNMENTAL ACTIVITIES</b>				
Capital assets not being depreciated				
None	\$ -	\$ -	\$ -	\$ -
Total capital assets not being depreciated	<u>-</u>	<u>-</u>	<u>-</u>	<u>-</u>
Capital assets being depreciated				
Vehicles	455,134	-	-	455,134
Furniture and equipment	537,701	142,839	-	680,540
Total capital assets being depreciated	<u>992,835</u>	<u>142,839</u>	<u>-</u>	<u>1,135,674</u>
Less accumulated depreciation for				
Vehicles	369,953	31,929	-	401,882
Furniture and equipment	442,167	38,353	-	480,520
Total accumulated depreciation	<u>812,120</u>	<u>70,282</u>	<u>-</u>	<u>882,402</u>
Total capital assets being depreciated, net	<u>180,715</u>	<u>72,557</u>	<u>-</u>	<u>253,272</u>
<b>GOVERNMENTAL ACTIVITIES</b>				
<b>CAPITAL ASSETS, NET</b>	<u>\$ 180,715</u>	<u>\$ 72,557</u>	<u>\$ -</u>	<u>\$ 253,272</u>

Depreciation expense was charged to functions of the primary government as follows:

<b>GOVERNMENTAL ACTIVITIES</b>	
Culture and recreation	<u>\$ 70,282</u>

**NORTHEAST DUPAGE SPECIAL RECREATION ASSOCIATION**  
**ADDISON, ILLINOIS**  
NOTES TO FINANCIAL STATEMENTS (Continued)

---

**4. LONG-TERM DEBT**

During the year, the following changes occurred in governmental long-term liabilities:

	Beginning Balance	Additions	Retirements	Ending Balance	Current Portion
Notes payable	\$ 149,000	\$ -	\$ 149,000	\$ -	\$ -
Compensated absences	37,536	-	5,102	32,434	-
Net pension liability	643,882	-	212,697	431,185	-
<b>TOTAL</b>	<b>\$ 830,418</b>	<b>\$ -</b>	<b>\$ 366,799</b>	<b>\$ 463,619</b>	<b>\$ -</b>

a. Notes Payable - Paycheck Protection Program

The Paycheck Protection Program is a low-interest Small Business Administration (SBA) loan and generally covers two and half months of payroll costs and may be forgiven entirely if the borrower maintains certain staffing levels and spends a certain amount of funds on salaries and other qualifying expenditures during the qualified period. The Association was approved for a loan on February 2021, under this program, in the amount of \$149,000 which was forgiven in June 2021.

**5. FUND BALANCE**

The following is a description of fund balance restrictions, commitments and assignments as of April 30, 2022:

Restricted for Vehicle Replacement

The Board of Trustees implemented a policy establishing this reserve in 1977. In 1989, the policy was revised to allow for specific dollar amounts to be appropriated each year for replacement of each vehicle owned by the Association. In January of 1995, the policy was revised again to suggest these funds be generated by fund development and other cost saving methods. All efforts would be made to maintain the vehicle replacement schedule as adopted in 1989 and re-affirmed November 1, 2000. This schedule is reviewed and approved each year as part of the annual budget process.

The Association currently owns eight vehicles. Funds may be generated through local fund development initiatives. Specific service groups or grants may elect to pledge specific dollar amounts toward the replacement costs of these vehicles.

**NORTHEAST DUPAGE SPECIAL RECREATION ASSOCIATION**  
**ADDISON, ILLINOIS**  
NOTES TO FINANCIAL STATEMENTS (Continued)

---

**5. FUND BALANCE (Continued)**

Restricted for Special Olympics Boosters Club

The Association’s Special Olympic Boosters Club has been in existence for seven years and has become an important aspect of the Association’s service delivery system. The club members are parents and friends who are supportive of the children and adults who participate in the Association’s Special Olympic programs and activities. They function as a support group, an advisory group and a fund raising group that allows our Special Olympic athletes to engage in more tournaments and competitions including attending state and regional games. This year they were successful in raising \$730 in direct support of these outstanding athletes.

Restricted for Jeena Greenwalt Scholarships

The Jeena Greenwalt Spirit and Scholarship Fund was set up in memory of Jeena Greenwalt, a former NEDSRA employee and the Executive Director for three years. This award is given each year to a participant that most exemplifies and demonstrates Jeena’s spirit, enthusiasm, lover for life, courage and positive impact.

Restricted for Hispanic Scholarships

Through collaboration with the Hispanic Parent Focus Group, NEDSRA is raises funds for the Hispanic Scholarship. This scholarship will be awarded to resident Hispanic families using to attending NEDSRA programming.

Fund Balance Classifications

The following is a schedule of fund balance restrictions as of the date of this report:

	Beginning Balances	Revenues	Expenses	Ending Balances
General Fund				
Restricted				
Vehicle Replacement	\$ 550	\$ -	\$ -	\$ 550
Special Olympics Booster Club	13,061	730	2,244	11,547
Jeena Greenwalt Scholarship	3,755	10,000	400	13,355
Hispanic Scholarship	-	1,000	-	1,000
<b>TOTAL</b>	<b>\$ 17,366</b>	<b>\$ 11,730</b>	<b>\$ 2,644</b>	<b>\$ 26,452</b>



**NORTHEAST DUPAGE SPECIAL RECREATION ASSOCIATION**  
**ADDISON, ILLINOIS**  
NOTES TO FINANCIAL STATEMENTS (Continued)

---

**5. FUND BALANCE (Continued)**

Fund Balance Classifications (Continued)

The following is a schedule of fund balance classifications for the governmental fund as of April 30, 2022:

	<u>General</u>
Fund balances	
Nonspendable	
Prepays	\$ 4,150
Restricted	
Vehicle Replacement	550
Special Olympics	11,547
Jeena Greenwalt Scholarship	13,355
Hispanic Scholarship	1,000
Committed for ADA Projects	440,972
Assigned for subsequent year's budget	136,866
Unassigned	<u>1,533,389</u>
 TOTAL FUND BALANCES	 <u><u>\$ 2,141,829</u></u>

**6. RISK MANAGEMENT**

The Association is exposed to various risks related to torts; theft of, damage to and destruction of assets; errors and omissions; injuries to employees; and net income losses. Since 1986, the Association has been a member of the Park District Risk Management Agency (PDRMA), a joint risk management pool of park and forest preserve districts and special recreation associations through which property, general liability, automobile liability, crime, boiler and machinery, public officials' employment practices liability and workers' compensation coverage is provided in excess of specified limits for the members, acting as a single insurable unit. Losses exceeding the per occurrence self-insured and reinsurance limit would be the responsibility of the Association.

As a member of PDRMA's Property/Casualty Program, the Association is represented on the Property/Liability/Workers' Compensation Program Council and the Membership Assembly and is entitled to one vote on each. The relationship between the Association and PDRMA is governed by a contract and by-laws that have been adopted by resolution of the Association's governing body. The Association is contractually obligated to make all annual and supplementary contributions to PDRMA, to report claims on a timely basis, cooperate with PDRMA, its claim administrator and attorneys in claims investigation and settlement, and to follow risk management procedures as outlined by PDRMA.

**NORTHEAST DUPAGE SPECIAL RECREATION ASSOCIATION**  
**ADDISON, ILLINOIS**  
NOTES TO FINANCIAL STATEMENTS (Continued)

---

**6. RISK MANAGEMENT (Continued)**

Members have a contractual obligation to fund any deficit of PDRMA attributable to a membership year which they were a member.

PDRMA is responsible for administering the self-insurance program and purchasing excess insurance according to the direction of the Program Council. PDRMA also provides its members with risk management services, including the defense of and settlement of claims and establishes reasonable and necessary loss reduction and prevention procedures to be followed by the members.

On February 1, 1986, the Association became a member of the PDRMA Health Program, a health insurance pool of park districts, special recreation associations and public service organizations through which medical, vision, dental, life and prescription drug coverages are provided in excess of specified limits for the members, acting as a single insurable unit. The pool purchases excess insurance covering single claims over \$250,000. Until January 1, 2001, the PDRMA Health Program was a separate legal entity formerly known as the Illinois Park Employees Health Network (IPEHN).

Members can choose to provide any combination of coverages available to their employees and pay premiums accordingly.

As a member of the PDRMA Health Program, the Association is represented on the Health Program Council as well as the Membership Assembly and is entitled to one vote on each. The relationship between the member agency and PDRMA Health Program is governed by a contract and by-laws that have been adopted by a resolution of each member's governing body. Members are contractually obligated to make all monthly payments to the PDRMA Health Program and to fund any deficit of the PDRMA Health Program upon dissolution of the pool. They will share in any surplus of the pool based on a decision by the Health Program Council.

A large percentage of PDRMA's liabilities are reserves for losses and loss adjustment expenses, which are based on an actuarial estimate of the ultimate losses incurred.

**7. CONTINGENT LIABILITIES**

Grants

Amounts received or receivable from grantor agencies are subject to audit and adjustment by grantor agencies, principally the federal government. Any disallowed claims, including amounts already collected, may constitute a liability of the applicable funds. The amount, if any, of expenditures which may be disallowed by the grantor cannot be determined at this time; although, the Association expects such amounts, if any, to be immaterial.

**NORTHEAST DUPAGE SPECIAL RECREATION ASSOCIATION**  
**ADDISON, ILLINOIS**  
 NOTES TO FINANCIAL STATEMENTS (Continued)

---

**8. RETIREMENT FUND COMMITMENTS**

Illinois Municipal Retirement Fund

The Association’s defined benefit pension plan, Illinois Municipal Retirement Fund (IMRF), provides retirement, disability, annual cost of living adjustments and death benefits to plan members and beneficiaries. IMRF is an agent multiple-employer pension plan that acts as a common investment and administrative agent for local governments and school districts in Illinois. The Illinois Pension Code establishes the benefit provisions of the plan that can only be amended by the Illinois General Assembly. IMRF issues a publicly available report that includes financial statements and supplementary information for the plan as a whole but not by individual employer. That report may be obtained by writing to the Illinois Municipal Retirement Fund, 2211 York Road, Suite 500, Oak Brook, Illinois 60523 or at [www.imrf.org](http://www.imrf.org).

*Plan Administration*

All employees hired in positions that meet or exceed the prescribed annual hourly standard must be enrolled in IMRF as participating members.

The plan is accounted for on the economic resources measurement focus and the accrual basis of accounting. Employer and employee contributions are recognized when earned in the year that the contributions are required, benefits and refunds are recognized as an expense and liability when due and payable.

*Plan Membership*

At December 31, 2021, IMRF membership consisted of:

Inactive employees or their beneficiaries currently receiving benefits	3
Inactive employees entitled to but not yet receiving benefits	13
Active employees	<u>13</u>
 TOTAL	 <u><u>29</u></u>

*Benefits Provided*

IMRF provides two tiers of pension benefits. Employees hired prior to January 1, 2011 are eligible for Tier 1 benefits. For Tier 1 employees, pension benefits vest after eight years of service. Participating members who retire at age 55 (reduced benefits) or after age 60 (full benefits) with eight years of credited service are entitled to an annual retirement benefit, payable monthly for life, in an amount equal to 1 2/3% of their final rate of earnings, for each year of credited service up to 15 years, and 2% for each year thereafter. Employees hired on or after January 1, 2011 are eligible for Tier 2 benefits. For Tier 2 employees, pension benefits vest after ten years of service. Participating members who retire at age 62

**NORTHEAST DUPAGE SPECIAL RECREATION ASSOCIATION**  
**ADDISON, ILLINOIS**  
 NOTES TO FINANCIAL STATEMENTS (Continued)

---

**8. RETIREMENT FUND COMMITMENTS (Continued)**

Illinois Municipal Retirement Fund (Continued)

*Benefits Provided (Continued)*

(reduced benefits) or after age 67 (full benefits) with ten years of credited service are entitled to an annual retirement benefit, payable monthly for life, in an amount equal to 1 2/3% of their final rate of earnings, for each year of credited service up to 15 years, and 2% for each year thereafter. IMRF also provides death and disability benefits. These benefit provisions and all other requirements are established by state statute.

*Contributions*

Participating members are required to contribute 4.50% of their annual covered salary to IMRF. The Association is required to contribute the remaining amounts necessary to fund IMRF as specified by statute. The employer contribution rate for the fiscal year ended April 30, 2022 was 14.78% of covered payroll.

*Actuarial Assumptions*

The Association's net pension liability was measured as of December 31, 2021 and the total pension liability used to calculate the net pension liability was determined by an actuarial valuation performed as of the same date using the following actuarial methods and assumptions.

Actuarial valuation date	December 31, 2021
Actuarial cost method	Entry-age normal
Assumptions	
Price inflation	2.25%
Salary increases	2.85% to 13.75%
Interest rate	7.25%
Cost of living adjustments	3.00%
Asset valuation method	Fair value

For non-disabled retirees, the Pub-2010, Amount-Weighted, below-median income, General, Retiree, Male (adjusted 106%) and Female (adjusted 105%) tables, and future mortality improvements projected using scale MP-2020. For disabled retirees, the Pub-2010, Amount-Weighted, below-median income, General, Disabled Retiree, Male and Female (both unadjusted) tables, and future mortality improvements projected using scale MP-2020. For active members, the Pub-2010, Amount-Weighted, below-median income, General, Employee, Male and Female (both unadjusted) tables, and future mortality improvements projected using scale MP-2020.

**NORTHEAST DUPAGE SPECIAL RECREATION ASSOCIATION**  
**ADDISON, ILLINOIS**  
NOTES TO FINANCIAL STATEMENTS (Continued)

**8. RETIREMENT FUND COMMITMENTS (Continued)**

Illinois Municipal Retirement Fund (Continued)

*Discount Rate*

The discount rate used to measure the total pension liability was 7.25%. The projection of cash flows used to determine the discount rate assumed that member contributions will be made at the current contribution rate and that the Association's contributions will be made at rates equal to the difference between actuarially determined contribution rates and the member rate. Based on those assumptions, the Association's fiduciary net position was projected to be available to make all projected future benefit payments of current plan members.

*Changes in the Net Pension Liability*

	(a) Total Pension Liability	(b) Plan Fiduciary Net Position	(a) - (b) Net Pension Liability
BALANCES AT JANUARY 1, 2021	\$ 3,474,816	\$ 2,830,934	\$ 643,882
Changes for the period			
Service cost	54,556	-	54,556
Interest	252,806	-	252,806
Difference between expected and actual experience	8,221	-	8,221
Changes in assumptions	-	-	-
Employer contributions	-	123,486	(123,486)
Employee contributions	-	30,233	(30,233)
Net investment income	-	391,454	(391,454)
Benefit payments and refunds	(30,223)	(30,223)	-
Administrative expense	-	-	-
Other (net transfer)	-	(16,893)	16,893
Net changes	285,360	498,057	(212,697)
BALANCES AT DECEMBER 31, 2021	\$ 3,760,176	\$ 3,328,991	\$ 431,185

**NORTHEAST DUPAGE SPECIAL RECREATION ASSOCIATION**  
**ADDISON, ILLINOIS**  
NOTES TO FINANCIAL STATEMENTS (Continued)

**8. RETIREMENT FUND COMMITMENTS (Continued)**

Illinois Municipal Retirement Fund (Continued)

*Pension Expense and Deferred Outflows of Resources and Deferred Inflows of Resources*

For the year ended April 30, 2022, the Association recognized pension expense of \$64,860. At April, 30, 2022, the Association reported deferred outflows of resources and deferred inflows of resources related to IMRF from the following sources:

	Deferred Outflows of Resources	Deferred Inflows of Resources
Difference between expected and actual experience	\$ 201,994	\$ 23,020
Changes in assumption	32,194	32,130
Net difference between projected and actual earnings on pension plan investments	-	232,241
Contributions after the measurement date	45,912	-
	<hr/>	<hr/>
TOTAL	\$ 280,100	\$ 287,391

\$45,912 reported as deferred outflows of resources result from the Association contributions subsequent to the measurement date will be recognized as a reduction of the net pension liability in the year ending April 30, 2023. Other amounts reported as deferred outflows of resources and deferred inflows of resources related to IMRF will be recognized in pension expense as follows:

<u>Year Ending April 30,</u>	
2023	\$ (5,136)
2024	(33,368)
2025	(5,512)
2026	(8,428)
2027	(759)
Thereafter	<hr/> -
TOTAL	<hr/> \$ (53,203)

**NORTHEAST DUPAGE SPECIAL RECREATION ASSOCIATION**  
**ADDISON, ILLINOIS**  
NOTES TO FINANCIAL STATEMENTS (Continued)

---

**8. RETIREMENT FUND COMMITMENTS (Continued)**

Illinois Municipal Retirement Fund (Continued)

*Discount Rate Sensitivity*

The following is a sensitivity analysis of the net pension liability to changes in the discount rate. The table below presents the net pension liability of the Association calculated using the discount rate of 7.25% as well as what the Association's net pension liability would be if it were calculated using a discount rate that is 1 percentage point lower (6.25%) or 1 percentage point higher (8.25%) than the current rate:

	1% Decrease (6.25%)	Current Discount Rate (7.25%)	1% Increase (8.25%)
Net pension liability	\$ 767,962	\$ 431,185	\$ 225,323

**9. OTHER POSTEMPLOYMENT BENEFITS**

a. Plan Description

In addition to providing the pension benefits described, the Association provides other postemployment health care benefits (OPEB) for retired employees through a single-employer defined benefit plan. The benefits, benefit levels, employee contributions and employer contributions are governed by the Association and can be amended by the Association through its personnel manual. The plan is not accounted for as a trust, as an irrevocable trust has not been established to account for the plan. The plan does not issue a separate report. The Association's total OPEB liability as of April 30, 2022 is immaterial and, therefore, not recorded by the Association.

The following are the summary results from the Association's actuarial valuation performed at September 30, 2021:

Liabilities	\$ 20,261
Deferred inflows of resources	20,601
Deferred outflows of resources	6,889
Total OPEB expense	2,233

**NORTHEAST DUPAGE SPECIAL RECREATION ASSOCIATION**  
**ADDISON, ILLINOIS**  
NOTES TO FINANCIAL STATEMENTS (Continued)

---

**9. OTHER POSTEMPLOYMENT BENEFITS (Continued)**

b. Benefits Provided

The Association provides OPEB and life insurance benefits to its retirees. To be eligible for benefits, an employee must qualify for retirement under the Association's retirement plan. The retirees pay 100% of the average employer group cost.

c. Membership

At September 30, 2021, membership consisted of:

Retirees and beneficiaries currently receiving benefits	-
Terminated employees entitled to benefits but not yet receiving them	-
Active employees	<u>9</u>
<b>TOTAL</b>	<u><u>9</u></u>



**REQUIRED SUPPLEMENTARY INFORMATION**

**NORTHEAST DUPAGE SPECIAL RECREATION ASSOCIATION  
ADDISON, ILLINOIS**

**SCHEDULE OF REVENUES, EXPENDITURES AND  
CHANGES IN FUND BALANCE - BUDGET AND ACTUAL  
GENERAL FUND**

For the Year Ended April 30, 2022

	<b>Final Budget</b>	<b>Actual</b>	<b>Variance</b>
<b>REVENUES</b>			
Member agency contributions	\$ 1,681,917	\$ 1,681,916	\$ (1)
Charges for services	246,279	198,447	(47,832)
Fund development	116,347	107,325	(9,022)
Intergovernmental	244,400	232,094	(12,306)
Investment income	2,400	1,466	(934)
Miscellaneous	5,000	16,771	11,771
<b>Total revenues</b>	<b>2,296,343</b>	<b>2,238,019</b>	<b>(58,324)</b>
<b>EXPENDITURES</b>			
Culture and recreation	2,580,424	1,922,473	(657,951)
<b>Total expenditures</b>	<b>2,580,424</b>	<b>1,922,473</b>	<b>(657,951)</b>
<b>NET CHANGE IN FUND BALANCE</b>	<b>\$ (284,081)</b>	<b>315,546</b>	<b>\$ 599,627</b>
<b>FUND BALANCE, MAY 1</b>		<b>1,813,977</b>	
<b>FUND BALANCE, APRIL 30</b>		<b>\$ 2,129,523</b>	

(See independent auditor's report.)

**NORTHEAST DUPAGE SPECIAL RECREATION ASSOCIATION  
ADDISON, ILLINOIS**

**NOTES TO REQUIRED SUPPLEMENTARY INFORMATION**

April 30, 2022

---

**BUDGETS**

The Association's Board of Trustees and staff have participated in several thorough processes that resulted in a very comprehensive budget, maintaining financial stability and strength, while addressing many diverse issues.

The process includes, but is not limited to the following:

- a. Approval of Mission and Vision Statement.
- b. Review and approve Strategic Directions and Initiatives.
- c. Direct staff to draft a budget based on Initiatives and Financial Stability Plan.
- d. Study alternatives for objectives and funding.
- e. Review and approve funding alternatives and restructuring of specific fund accounts, financial practices and personnel.
- f. Draft a balanced budget for review by the committee structure and presentation to the Board of Trustees.

The budget process requires that the Association continue to seek a variety of sources of funding, both locally and at the state level. In formulating the budget, the Association is guided by the Mission and Vision and Values, Strategic Directions and Key Initiatives.

The budget process follows the following calendar:

- |         |   |
|---------|---|
| October | Staff begins developing budget projections.                   |
| March   | Review of proposed budget at March Board of Trustees meeting. |
| April   | Budget is presented to Board of Trustees for approval.        |

Budgets are adopted on the cash basis, which is not materially different than GAAP. All budget authority lapses at the end of the year. There were no budget amendments made during the current year. The level of budgetary control is at the fund level.

**NORTHEAST DUPAGE SPECIAL RECREATION ASSOCIATION  
ADDISON, ILLINOIS**

SCHEDULE OF EMPLOYER CONTRIBUTIONS  
ILLINOIS MUNICIPAL RETIREMENT FUND

Last Seven Fiscal Years

<b>FISCAL YEAR ENDED APRIL 30,</b>	<b>2016</b>	<b>2017</b>	<b>2018</b>	<b>2019</b>	<b>2020</b>	<b>2021</b>	<b>2022</b>
Actuarially determined contribution	\$ 139,783	\$ 137,565	\$ 140,120	\$ 158,431	\$ 151,012	\$ 131,472	\$ 132,581
Contributions in relation to the actuarially determined contribution	139,783	137,565	140,120	158,431	151,012	131,472	132,581
<b>CONTRIBUTION DEFICIENCY (Excess)</b>	<b>\$ -</b>	<b>\$ -</b>	<b>\$ -</b>	<b>\$ -</b>	<b>\$ -</b>	<b>\$ -</b>	<b>\$ -</b>
Covered payroll	\$ 1,217,368	\$ 1,278,772	\$ 1,166,758	\$ 1,244,870	\$ 1,254,453	\$ 788,666	\$ 897,175
Contributions as a percentage of covered payroll	11.48%	10.76%	12.01%	12.73%	12.04%	16.67%	14.78%

Notes to Required Supplementary Information

The information presented was determined as part of the actuarial valuations as of December 31 of the prior fiscal year. Additional information as of the latest actuarial valuation presented is as follows: the actuarial cost method was entry-age normal; the amortization method was level percent of pay, closed and the amortization period was 22 years; the asset valuation method was five-year smoothed market; and the significant actuarial assumptions were an investment rate of return at 7.25% annually, projected salary increases assumption of 3.35% to 14.25% compounded annually and postretirement benefit increases of 3.50% compounded annually.

Ultimately, this schedule should present information for the last ten years. However, until ten years of information can be compiled, information will be presented for as many years as is available.

(See independent auditor's report.)

**NORTHEAST DUPAGE SPECIAL RECREATION ASSOCIATION  
ADDISON, ILLINOIS**

SCHEDULE OF CHANGES IN THE EMPLOYER'S  
NET PENSION LIABILITY AND RELATED RATIOS  
ILLINOIS MUNICIPAL RETIREMENT FUND

Last Seven Years

<b>MEASUREMENT DATE DECEMBER 31,</b>	<b>2015</b>	<b>2016</b>	<b>2017</b>	<b>2018</b>	<b>2019</b>	<b>2020</b>	<b>2021</b>
<b>TOTAL PENSION LIABILITY</b>							
Service cost	\$ 85,656	\$ 86,024	\$ 79,669	\$ 71,417	\$ 80,128	\$ 77,131	\$ 54,556
Interest	126,309	159,391	180,411	190,325	209,523	234,046	252,806
Changes of benefit terms	-	-	-	-	-	-	-
Differences between expected and actual experience	308,042	60,489	(63,715)	36,962	78,343	17,687	8,221
Changes of assumptions	-	-	(37,051)	71,486	-	(27,014)	-
Benefit payments, including refunds of member contributions	(137,911)	(20,297)	(24,612)	(21,395)	(23,090)	(33,388)	(30,223)
Net change in total pension liability	382,096	285,607	134,702	348,795	344,904	268,462	285,360
Total pension liability - beginning	1,710,250	2,092,346	2,377,953	2,512,655	2,861,450	3,206,354	3,474,816
<b>TOTAL PENSION LIABILITY - ENDING</b>	<b>\$ 2,092,346</b>	<b>\$ 2,377,953</b>	<b>\$ 2,512,655</b>	<b>\$ 2,861,450</b>	<b>\$ 3,206,354</b>	<b>\$ 3,474,816</b>	<b>\$ 3,760,176</b>
<b>PLAN FIDUCIARY NET POSITION</b>							
Contributions - employer	\$ 133,214	\$ 133,767	\$ 137,391	\$ 165,540	\$ 154,218	\$ 142,954	\$ 123,486
Contributions - member	133,424	38,123	36,801	38,009	38,944	38,682	30,233
Net investment income	4,959	87,496	187,839	(1,703)	275,872	284,661	391,454
Benefit payments, including refunds of member contributions	(137,911)	(20,297)	(24,612)	(21,395)	(23,090)	(33,388)	(30,223)
Other (net transfer)	146,880	(3,886)	(16,219)	7,724	(2,650)	2,056	(16,893)
Net change in plan fiduciary net position	280,566	235,203	321,200	188,175	443,294	434,965	498,057
Plan fiduciary net position - beginning	927,531	1,208,097	1,443,300	1,764,500	1,952,675	2,395,969	2,830,934
<b>PLAN FIDUCIARY NET POSITION - ENDING</b>	<b>\$ 1,208,097</b>	<b>\$ 1,443,300</b>	<b>\$ 1,764,500</b>	<b>\$ 1,952,675</b>	<b>\$ 2,395,969</b>	<b>\$ 2,830,934</b>	<b>\$ 3,328,991</b>
<b>EMPLOYER'S NET PENSION LIABILITY</b>	<b>\$ 884,249</b>	<b>\$ 934,653</b>	<b>\$ 748,155</b>	<b>\$ 908,775</b>	<b>\$ 810,385</b>	<b>\$ 643,882</b>	<b>\$ 431,185</b>

<b>MEASUREMENT DATE DECEMBER 31,</b>	<b>2015</b>	<b>2016</b>	<b>2017</b>	<b>2018</b>	<b>2019</b>	<b>2020</b>	<b>2021</b>
Plan fiduciary net position as a percentage of the total pension liability	57.70%	60.70%	70.20%	68.20%	74.70%	81.50%	88.50%
Covered payroll	\$ 919,881	\$ 852,122	\$ 787,588	\$ 812,337	\$ 868,598	\$ 769,492	\$ 683,800
Employer's net pension liability as a percentage of covered payroll	96.10%	109.70%	95.00%	111.90%	93.30%	83.70%	63.10%

Notes to Required Supplementary Information

2017 - changes in assumptions related to inflation rates, salary rates and mortality rates

2018 - changes in assumptions related to the investment rate of return

2019 - None

2020 - changes in assumptions related to inflation rates, salary rates and mortality rates

2021 - None

Ultimately, this schedule should present information for the last ten years. However, until ten years of information can be compiled, information will be presented for as many years as is available.

(See independent auditor's report.)

**SUPPLEMENTAL SCHEDULE**

**NORTHEAST DUPAGE SPECIAL RECREATION ASSOCIATION  
ADDISON, ILLINOIS**

SCHEDULE OF EXPENDITURES - BUDGET AND ACTUAL  
GENERAL FUND

For the Year Ended April 30, 2022  
(with comparative actual)

	2022		2021
	Final Budget	Actual	Actual
<b>CULTURE AND RECREATION</b>			
Salaries			
Full-time salaries	\$ 692,409	\$ 668,391	\$ 739,967
Part-time salaries	364,406	228,783	48,700
Total salaries	<u>1,056,815</u>	<u>897,174</u>	<u>788,667</u>
Insurance/personnel benefits			
FICA and Medicare payments	80,846	67,166	57,873
Liability insurance	10,095	10,419	8,148
Property insurance	13,498	14,271	11,031
Pension plan	137,142	132,581	131,472
Hospitalization/health insurance	153,942	124,034	143,286
Unemployment compensation insurance	1,500	12,170	-
Workers' compensation insurance	4,602	3,434	3,890
Total insurance/personnel benefits	<u>401,625</u>	<u>364,075</u>	<u>355,700</u>
Professional services			
Audit services	11,385	11,385	11,000
Legal services	5,000	999	3,878
Consultants	16,568	17,788	15,618
Payroll services	13,500	11,359	8,409
Business services	64,499	53,052	57,830
Total professional services	<u>110,952</u>	<u>94,583</u>	<u>96,735</u>
Operations			
Printing	6,000	3,271	-
Office supplies/duplicating	10,815	8,103	9,151
Postage	4,000	788	887
Maintenance/operations supplies	24,600	18,727	18,459
Maintenance/contractual agreements	29,495	21,821	24,625
Bank fees and charges	10,250	8,427	6,742
Legal publications	4,115	1,971	1,115
Loss prevention	12,640	3,196	3,168
Park district portion expenditures	-	-	20
Meeting related expenditures	3,500	3,759	141
Subscriptions and publications	3,000	4,934	3,808
Contractual services	31,397	21,169	17,920
Office improvements	30,300	39,381	13,431
Continuing educations/conferences	14,330	3,843	4,216

(This schedule is continued on the following page.)



**NORTHEAST DUPAGE SPECIAL RECREATION ASSOCIATION  
ADDISON, ILLINOIS**

SCHEDULE OF EXPENDITURES - BUDGET AND ACTUAL (Continued)  
GENERAL FUND

For the Year Ended April 30, 2022  
(with comparative actual)

	2022		2021
	Final Budget	Actual	Actual
<b>CULTURE AND RECREATION (Continued)</b>			
Operations (Continued)			
Marketing	\$ 8,600	\$ 4,627	\$ 642
Professional memberships	3,880	5,343	3,812
Equipment	8,280	6,452	2,030
Program supplies	56,448	32,617	9,561
Fundraising	18,762	24,455	240
Admissions/facility space	33,370	27,591	(129)
Statewide legislative initiative	500	41	-
Total operations	314,282	240,516	119,839
Utilities			
Telephone	18,000	28,433	23,256
Electricity	12,650	15,276	12,290
Natural gas	7,500	7,153	6,312
Water	1,550	1,145	669
Total utilities	39,700	52,007	42,527
Other			
Fundraising	12,500	13,503	9,660
Boosters	-	2,244	775
Capital improvements	590,410	153,706	34,096
Scholarship fee assistance	9,000	8,273	481
Synergy expenses	10,000	10,000	5,229
Bad debt expense	-	1,224	17,086
Contingency	5,550	4,503	1,938
ADA partner reserved expenses	-	59,028	-
Total other	627,460	252,481	69,265
Vehicles			
Association vehicle fuel, equipment and tolls	13,000	8,849	1,637
Vehicle reimbursement, mileage and tolls	2,190	953	911
Parts replacement	14,400	11,835	5,144
Total vehicles	29,590	21,637	7,692
<b>TOTAL EXPENDITURES</b>	<b>\$ 2,580,424</b>	<b>\$ 1,922,473</b>	<b>\$ 1,480,425</b>

(See independent auditor's report.)

**SUPPLEMENTAL FINANCIAL INFORMATION**

**NORTHEAST DUPAGE SPECIAL RECREATION ASSOCIATION  
ADDISON, ILLINOIS**

**MEMBER AGENCY CONTRIBUTIONS  
GENERAL FUND**

For the Year Ended April 30, 2022

---

<b>Member Agency</b>	<b>Member Contributions</b>
Addison Park District	\$ 295,712
Bensenville Park District	188,460
Butterfield Park District	65,665
Village of Glendale Heights	181,796
Itasca Park District	94,316
Lombard Park District	312,981
Medinah Park District	89,599
Oakbrook Terrace Park District	71,014
Village of Schiller Park	92,671
Village of Villa Park	146,457
Wood Dale Park District	<u>143,245</u>
<b>TOTAL MEMBER CONTRIBUTIONS</b>	<b><u><u>\$ 1,681,916</u></u></b>

Note: Contributions are based upon the formula within the Articles of Agreement of the Association.

(See independent auditor's report.)

**NORTHEAST DUPAGE SPECIAL RECREATION ASSOCIATION  
ADDISON, ILLINOIS**

**DUE TO MEMBER AGENCIES**

For the Year Ended April 30, 2022

---

<b>Member Agency</b>	<b>ADA Liability</b>
Addison Park District	\$ 348,719
Bensenville Park District	153,911
Butterfield Park District	-
Village of Glendale Heights	3,466
Itasca Park District	1
Lombard Park District	-
Medinah Park District	-
Oakbrook Terrace Park District	-
Village of Schiller Park	-
Village of Villa Park	255,074
Wood Dale Park District	<u>5,539</u>
<b>TOTAL DUE TO MEMBER AGENCIES</b>	<b><u>\$ 766,710</u></b>

Note: Due to member agencies are based on agreements defined within the Articles of Agreement of the Association.

**NORTHEAST DUPAGE SPECIAL RECREATION ASSOCIATION  
ADDISON, ILLINOIS**

REVENUES BY SOURCE

Last Ten Fiscal Years

<b>Source</b>	<b>2013</b>	<b>2014</b>	<b>2015</b>	<b>2016</b>	<b>2017</b>	<b>2018</b>	<b>2019</b>	<b>2020</b>	<b>2021</b>	<b>2022</b>
Member agency contributions	\$ 1,616,770	\$ 1,525,149	\$ 1,525,149	\$ 1,525,149	\$ 1,531,915	\$ 1,564,086	\$ 1,593,185	\$ 1,623,460	\$ 1,658,694	\$ 1,681,916
Charges for services	273,449	290,326	285,819	352,261	325,600	334,822	355,205	297,851	34,980	198,447
Interest earned	10,897	15,769	8,418	1,870	2,142	2,300	8,874	7,296	2,340	1,466
Fund development	509,399	171,916	180,958	211,932	184,376	145,041	125,710	122,723	29,541	107,325
Intergovernmental	-	-	-	-	243,800	232,180	249,801	268,114	15,500	232,094
Cash allocation and fund transfers	90,000	431,763	260,316	-	-	-	-	-	-	-
Scholarships	47,102	35,281	30,538	22,762	23,366	18,038	15,993	17,242	-	-
Miscellaneous	32,309	27,609	19,280	164,595	21,217	12,757	8,385	19,328	7,856	16,771
<b>TOTAL</b>	<b>\$ 2,579,926</b>	<b>\$ 2,497,813</b>	<b>\$ 2,310,478</b>	<b>\$ 2,278,569</b>	<b>\$ 2,332,416</b>	<b>\$ 2,309,224</b>	<b>\$ 2,357,153</b>	<b>\$ 2,356,014</b>	<b>\$ 1,748,911</b>	<b>\$ 2,238,019</b>

(See independent auditor's report.)

**NORTHEAST DUPAGE SPECIAL RECREATION ASSOCIATION  
ADDISON, ILLINOIS**

EXPENDITURES BY SOURCE

Last Ten Fiscal Years

Source	2013	2014	2015	2016	2017	2018	2019	2020	2021	2022
Salaries	\$ 1,272,700	\$ 1,206,663	\$ 1,256,632	\$ 1,217,368	\$ 1,278,771	\$ 1,166,758	\$ 1,244,871	\$ 1,254,452	\$ 788,667	\$ 897,174
Insurance	367,129	298,048	338,907	413,079	422,976	430,827	432,013	422,573	355,700	364,075
Professional services	81,211	68,312	74,763	63,313	94,108	83,786	120,051	100,923	96,735	94,583
Operations	265,331	286,569	346,683	318,944	233,888	280,850	307,505	322,524	119,837	240,516
Utilities	37,681	35,706	35,174	38,288	34,132	35,140	42,326	40,365	42,527	52,007
Vehicles	47,810	47,677	106,222	38,427	99,058	49,346	102,529	78,278	7,692	21,637
Special projects	1,919	-	-	-	-	-	-	-	-	-
Capital improvements	5,100	252,658	41,767	15,773	-	-	85,990	32,348	34,096	153,706
Fundraising	24,524	20,986	22,397	24,899	22,331	23,341	2,021	890	9,660	13,503
Boosters	-	16,819	8,107	2,058	3,407	4,919	1,937	3,558	775	2,244
Scholarship fee assistance	-	29,314	30,565	18,963	21,116	14,653	14,425	17,686	481	8,273
Contractual	15,868	86,734	62,208	45,370	42,807	37,780	3,835	-	-	-
Pension liability allocation	-	605,522	-	2,021	2,054	25,771	23,560	24,673	5,229	10,000
Bad debt expense	-	-	-	-	-	-	-	7,869	17,086	1,224
Contingencies	10,351	8,407	(1,722)	3,090	3,962	3,422	9,925	4,289	1,938	4,503
ADA partner reserved expenses	-	-	-	-	-	-	-	-	-	59,028
<b>TOTAL</b>	<b>\$ 2,129,624</b>	<b>\$ 2,963,415</b>	<b>\$ 2,321,703</b>	<b>\$ 2,201,593</b>	<b>\$ 2,258,610</b>	<b>\$ 2,156,593</b>	<b>\$ 2,390,988</b>	<b>\$ 2,310,428</b>	<b>\$ 1,480,423</b>	<b>\$ 1,922,473</b>

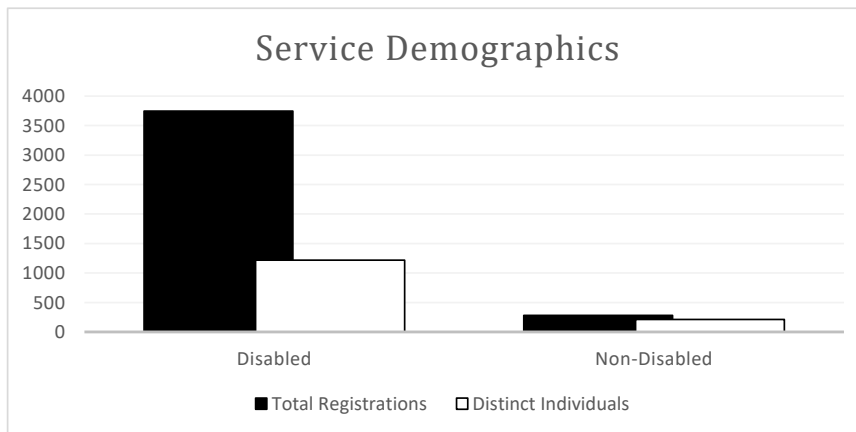
(See independent auditor's report.)

**NORTHEAST DUPAGE SPECIAL RECREATION ASSOCIATION  
ADDISON, ILLINOIS**

**SERVICE DEMOGRAPHICS - BY PARTNER AGENCY**

April 30, 2022

<b>Category</b>	<b>Registrations</b>	<b>Distinct Individuals</b>
<b>DISABLED - PARTNER AGENCY</b>		
Addison	690	132
Bensenville	231	53
Butterfield	5	1
Glendale Heights	179	82
Itasca	192	38
Lombard	709	169
Medinah	85	11
Oakbrook Terrace	2	2
Schiller Park	3	1
Villa Park	521	114
Wood Dale	295	36
Nonresident	834	579
<b>Total disabled</b>	<b>3,746</b>	<b>1,218</b>
<b>NONDISABLED</b>		
Nondisabled	279	212
<b>Total nondisabled</b>	<b>279</b>	<b>212</b>
<b>TOTAL</b>	<b>4,025</b>	<b>1,430</b>



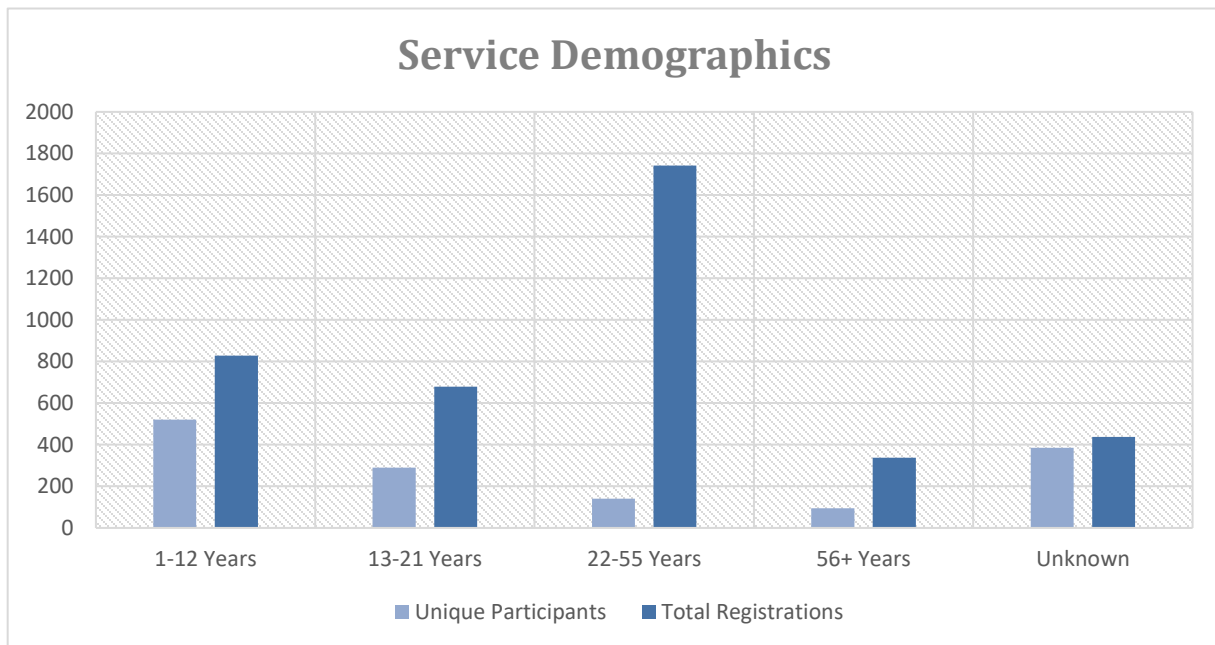
(See independent auditor's report.)

**NORTHEAST DUPAGE SPECIAL RECREATION ASSOCIATION  
ADDISON, ILLINOIS**

**SERVICE DEMOGRAPHICS - BY AGE GROUPS - DISABLED ONLY**

April 30, 2022

<b>Age Groups</b>		<b>Unique Participants</b>	<b>Registrations</b>
Youth	Ages 1-12	520	828
Young Adults	Ages 13-21	290	679
Adults	Ages 22-55	140	1,742
Seniors	Ages 56 and Older	95	338
Unknown		385	438
<b>TOTAL</b>		<b>1,430</b>	<b>4,025</b>



(See independent auditor's report.)



**NORTHEAST DUPAGE SPECIAL RECREATION ASSOCIATION  
ADDISON, ILLINOIS**

**HISTORICAL SERVICE COMPARISON**

Last Ten Fiscal Years

---

<b>Service Year</b>	<b>Number of Programs/ Services Implemented</b>	<b>Separate Individuals Served</b>	<b>Number of Registrations</b>
2012-2013	596	4,305	9,979
2013-2014	638	3,531	9,104
2014-2015	624	3,564	8,988
2015-2016	711	3,684	9,292
2016-2017	620	2,833	7,621
2017-2018	526	3,414	7,760
2018-2019	551	3,373	7,454
2019-2020	425	1,882	4,305
2020-2021	374	348	2,709
2021-2022	368	1,430	4,025

(See independent auditor's report.)